

innovative interiors,  
extraordinary people

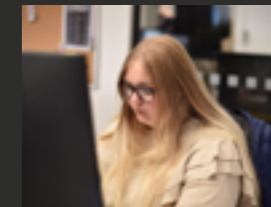
## Contents

- About Us 3
- Commercial 9
- Leisure 31

We're proud of what we've achieved since our very first shop fit in 2004.

This simple brochure celebrates our work and honours the extraordinary people who use the spaces we design, manufacture and install. Workspaces, places for leisure and learning, and specialist environments built with innovation, quality and a solutions-based approach. We're here, we're better today than yesterday, and we're building relationships for another twenty years.

**Matthew Burrows**  
Managing Director, TJM Projects



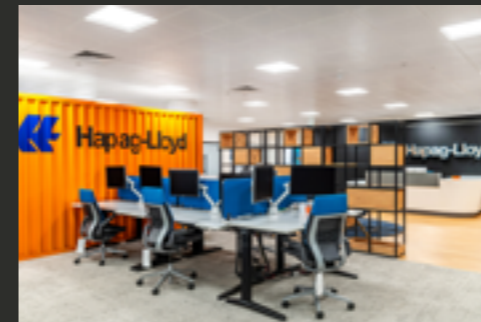
ABOUT US

Interior designers, quantity surveyors and meticulous M&E engineers



We design, manufacture, construct and install spaces, places and specialist environments.

We take a solutions based approach, we create a family, and we build relationships for the long-term. Our clients can be individuals, developers, corporations or governments. All of our work for the last twenty years has been made worthwhile by the extraordinary people that use the places we create.



COMMERCIAL

# Filling Manchester City Council with natural light

**Manchester City Council**

Full Internal Refurbishment | Cat B | Ceilings & Partitions | Manufactured Joinery | M&E | Furniture



COMMERCIAL

# A contemporary vision for Sevendale House

**Obi Property**

Internal Fit-out | M&E | Air Conditioning | Lighting | Decoration | Expertly Crafted Joinery



'For twenty years, TJM have delivered their bids with sharp pencils. But when it comes to a problem where you really need a partner, someone to deliver a properly considered project that's clear, safe and innovative, TJM are even sharper still.'

**Carl Burns**  
Liverpool City Council



# Solving access issues for the lawyers at Shoosmiths

**Shoosmiths Solicitors**

Internal Fit Out | M&E | Bespoke Fire Doors | Out Of Hours | Tight Access



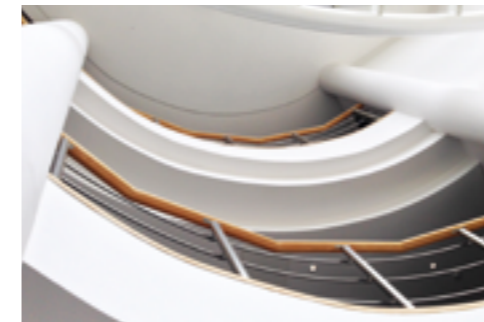
**SHOOSMITHS**

COMMERCIAL

# Bespoke joinery for one of the world's largest agrochemical firms

Syngenta

Strip Out & Refurbishment | In-House Manufacturing Using DuPont Corian



syngenta



# Radical new designs for cafés, restaurants and meeting spaces

## Birchwood Park

Full M&E | Bespoke Joinery | Designer Features & Fittings | Kitchen Design & Install



'We take pride in our success. It comes from the collaboration of brilliant minds and a wide spectrum of projects. What truly makes the last two decades fantastic is overcoming challenges, excelling against briefs, and embracing the multitude of projects that have shaped our remarkable story.

**Jayne Spruce**  
Director, TJM Projects



# Innovating with space inside a grade 2 listed building

Code Computerlove

Full Redevelopment | Folding & Moveable Walls | Silicone Jointed Partitions | Data | Bespoke Furniture



**code**<sup>®</sup>  
essencemediacom

# Creating a space that caters for the mixed needs of a diverse team

Lunio

Cat A / B fit-out | M&E | Designer Features & Fittings | Specialised Services | Joinery



LUNIO

# A contemporary office space designed to foster innovation.

## OJ Group Ops

Cat A Upgrade | Cat B fit-out to the specifications of both Allied London and OJ Group



'I arrived in 2006 as TJM's first apprentice joiner. I was 16 and fresh out of school in Wigan. I've seen us grow, buy Eckersley Joinery and step into more creative and specialist projects. I've progressed in my career, and today I'm leading twenty engineers on a site in Manchester.'

**Rob Bradley**  
Site Manager, TJM Projects



# Refitting a retro cocktail bar in rapid time for opening

DV8 Designs

3 Week Turnaround | Night Working | M&E Design



# Diverting water and groundworks to give stunning clubhouse vistas

## Glendale Golf

Groundworks | Diverting Calverts | New Dance Floor & Bar



DUXBURY PARK  
GOLF COURSE



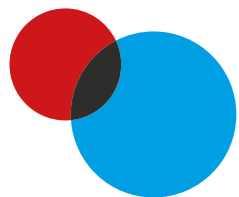
# Manufacturing in zinc for the kings of Asian street food

Tampopo

Full Refurbishment | Zinc Bar | M&E



# Reflecting on our journey and looking ahead



The world is changing,  
construction is changing and so  
are we.

Moving forward, experience tells us we'll be pre-fabricating and assembling more materials off site in our Manchester workshop. Modular designs and plug and play equipment will continue to make installs simpler, swifter and cleaner. We'll be taking on higher specification jobs and more specialist environments. Thank you to everyone who has been a part of our journey so far.

**Tony McCabe**

Director, TJM Projects

# Here's to another twenty years of quality and great people

2025

EDITION

## **TJM Projects Head Office**

10 Westside Industrial Estate  
Jackson Street, Saint Helens  
Merseyside WA9 3AT

## **Manufacturing**

Unit B, Bag Lane, Atherton  
Greater Manchester M46 0LY

## **Birchwood Park**

Chadwick House, Birchwood Park  
Warrington WA3 6AE

[info@tjmprojects.co.uk](mailto:info@tjmprojects.co.uk)  
01744 21212

[tjmprojects.co.uk](http://tjmprojects.co.uk)



est.  
2004